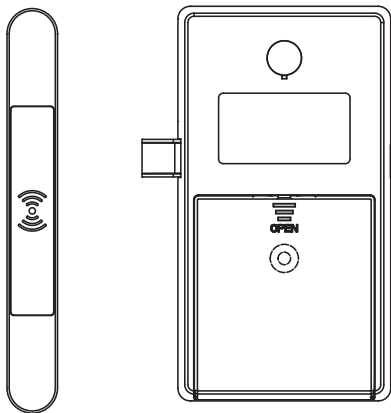


# CARD CABINET LOCK

## USER MANUAL



### Feature

1. Modes: Single and double opening mode
2. Aluminium alloy panel with elegant design
3. Surface mounted, widely used in drawer, cabinet, wardrobe etc.

## Instructions for use

### 1. Different Cards and Modes.

- ①Management card: Register door opening card + waiter card and emergency unlocking. Delete door opening and waiter card, and change unlocking mode.
- ②Door opening card: unlock.
- ③Waiter card: In double opening mode, unlock together with door opening card.
- ④Single opening mode: Use the door opening card to unlock the lock.
- ⑤Double opening mode: Use the door opening card and the waiter card to unlock the lock.

### 2. Single Opening Mode

- ①Set management card (1 card): The first card swiped in the factory setting is the management card. Place the card in the identification area then a long beep will indicate that registration is successful.
- ②Set door opening card (1-15 cards):Swipe the management card, the light flashes after a "beep" then the card can be registered. Place the card in the identified area, then there will be a long "beep", means the registration is successful. Then blue light continues to flash, and you can continue to register the card. If the registration is complete, wait for 6 seconds to exit the registering. If the card has been registered, swipe again and "Do Re Mi" will sound, and the card will be deleted.
- ③Unlock: Swipe the management card or door opening card, and the blue light will turn on after a long "beep", and the lock will be unlocked. After 4 seconds, the blue light will turn off and the lock will be locked. If the card is not successfully registered, there will be two "beep" to indicate that the unlocking failed.

### 3.Double Opening Mode

- ①Set management card (1 card): The first card swiped in the factory setting is the management card. Place the card in the identification area then a long beep will indicate that registration is successful.
- ②Set the Door opening card (1 card): Swipe the management card, and the light will flash after a "beep". Swipe the card and a long "beep" completes the register. Repeat this operation, the new card will become the new door opening card, and the old card will be deleted.

- ③Set waiter card (1-14 cards): Swipe the management card, and the blue light will flash after a "beep". Swipe the management card again, and you can register the card after a "Do Re Mi". A long "beep" indicates that the registration is completed. The blue light continues to flash, you can continue to register the card. If the registration is completed, wait for 6 seconds to exit the registering.
- ④Unlock: Waiter card and door opening card are swiping in no particular order. Swipe the waiter or door opening card, and the blue light flashes after a "beep". Then swipe the door opening or waiter card, and there will be a long "beep", the blue light will on, and the lock will open. After 4 seconds, the blue light will off and the lock will lock. If the card is not registered successfully, there will be two "beep", indicating that the unlocking failed.

### 4.Change the Mode and Factory Setting(Factory Setting is Single Mode)

- ①Single opening mode: After swiping the management card, there will be a "beep". Keep the card in the identification area for 4 seconds. A long "beep" will be heard, and the mode will be single opening mode. All cards will be deleted, and then you can take the management card away.
- ②Double opening mode: Follow operation ① but do not take away the management card and keep it in the identification area for 3 seconds. Then, "Do Re Mi" will sound, the mode will be double opening mode, all cards will be deleted.

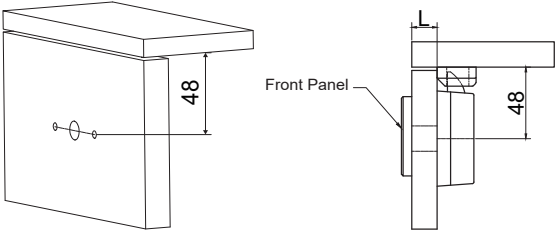
Note: If the management card is lost, you can restore the factory setting or change the door opening mode through the setting button of the lock body

### 5.Low Voltage Alarm

After unlocking, it will with 8 "beep", indicating that the battery voltage is too low. Please replace the battery in time.

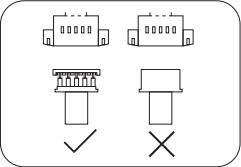
Installation Instructions

1. Put the installation drawing on the door, approx 48mm between the door frame and center hole (Picture 1), then drill the hole

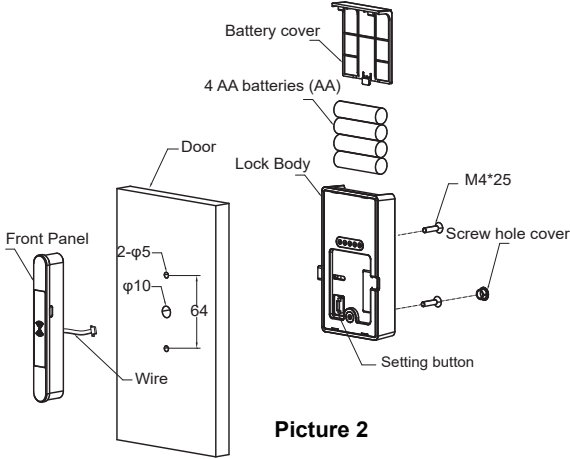


Picture 1

wire connection

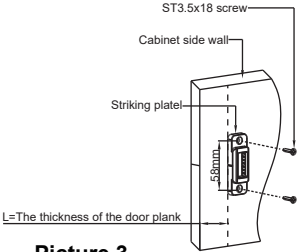


2. Wire goes through the center hole and fix the front panel by screw M4X25 , then connect the lock body, (Tide up the wire not crush), fix lock body by screw ST3.5X18



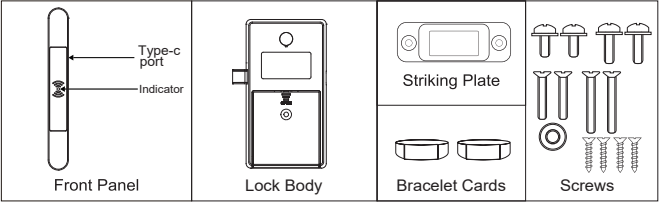
Picture 2

3. Fix the striking plate by screw ST3.5X18(Make sure latch works well)

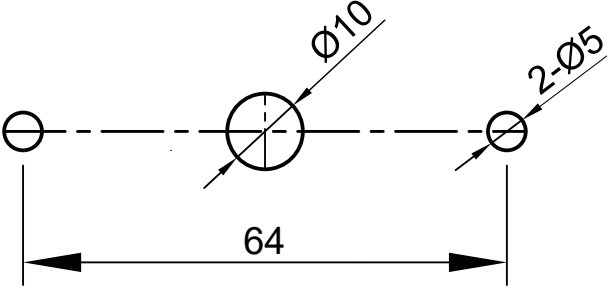


Picture 3

COMPONENT



INSTALLATION DRAWING



Follow the drawing to drill the hole