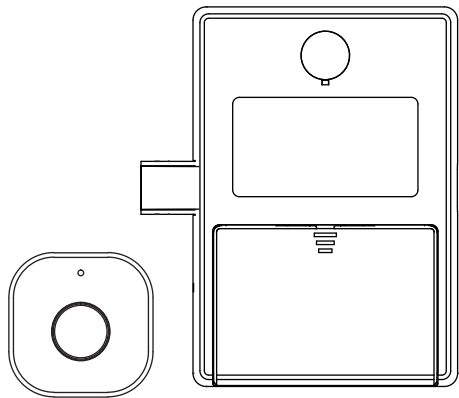


FINGERPRINT CABINET LOCK

USER MANUAL



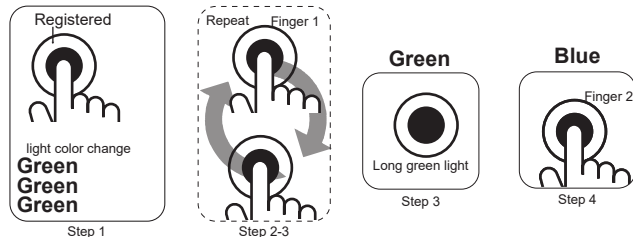
Feature

- Biometric sensors with high sensitivity
- Fingerprint capacity: 10
- E-key for emergency unlocking and management
- Usage Scenarios: drawer, cabinet, wardrobe etc.

V000231010

How to add new fingerprints

- Place your (registered) finger on the sensor. Waiting green light to come on for the third time then release your finger.
- Blue light is on, you can start recording your fingerprints.
- Repeat placing your finger on the sensor (blue and green lights flash alternately) until the green light stays on for 2 seconds (fingerprint registration is successful).
- The blue light is on again, the next fingerprint can be recorded. (If fingerprinting is not required, wait for the light to go out)



Note

- 1) Make sure add the fingerprint before using. Any finger can unlock in the factory setting
- 2) In order to keep the lock work well, to add no less than 3 fingerprints

How to delete fingerprints

Method 1

- Holding with the registered finger until a red light is illuminated.
- Release your finger.
- Green light for 2 seconds, registered fingerprints will be deleted.



Method 2

- Insert E-Key
- Place any finger on sensor and wait for the green light to red.
- Green light for 2 seconds, registered fingerprints will be deleted.



Other Functions

1. E-Key

- Insert E-Key
- Put any finger on sensor, green light on then remove, unlocked
- Pull the door open

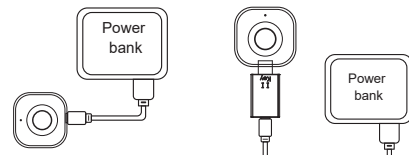


2. Low battery warning

- Insufficient power: Green and red lights flash frequently when unlocking the door. Please replace the battery in time
- Battery type: 3*AAA alkaline batteries. Prohibit the use of carbon batteries

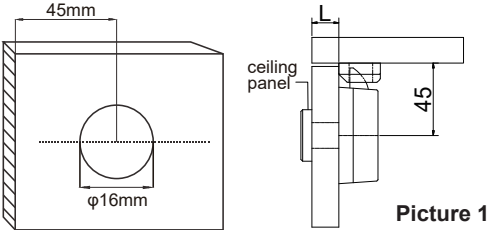
3. Emergency power

- Can be connected to a power bank or mobile plug for external power supply when the power is low. Replace the battery after unlocking.
- Fingerprint error and low battery occur at the same time, insert the E-key and external emergency.



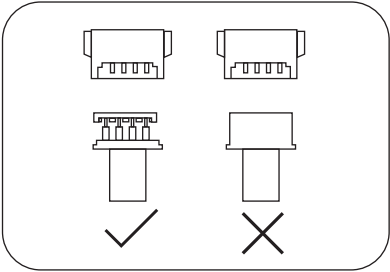
Installation Instructions

1. Put the installation drawing on the door, approx. 45mm between the door frame and center hole (Picture 1), then drill the hole



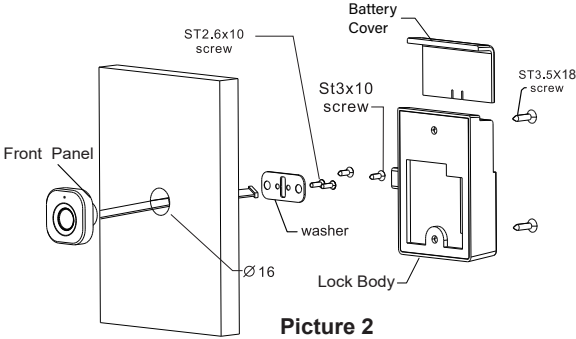
Picture 1

wire connection



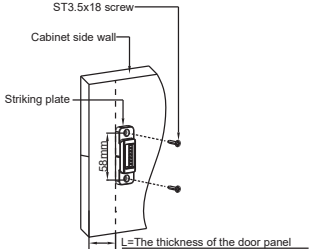
	Door Thickness (mm)	Screw
1	14mm~16mm	ST2.6x10
2	17mm~21mm	ST2.6x14

- 1) Insert connecting wire (See picture 2) into the front panel, then wire goes through the centre hole; Fix the panel by screw ST2.6X10 and washer
- 2) Fix the washer to the door panel with screws ST3 X10
- 3) Insert connection wire (See Picture 2) into lock body, then fix by screw ST3.5X18MM.



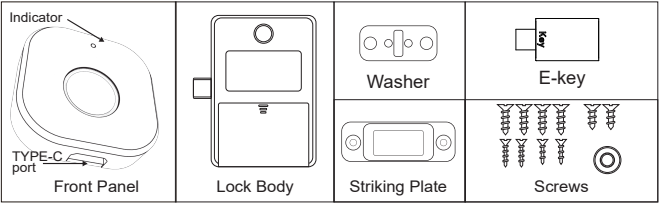
Picture 2

3. Fix the striking plate by screw ST3.5X18 (Make sure latch works well)

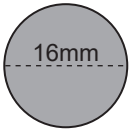


Picture 3

COMPONENT



INSTALLATION DRAWING



Follow the drawing to drill the hole