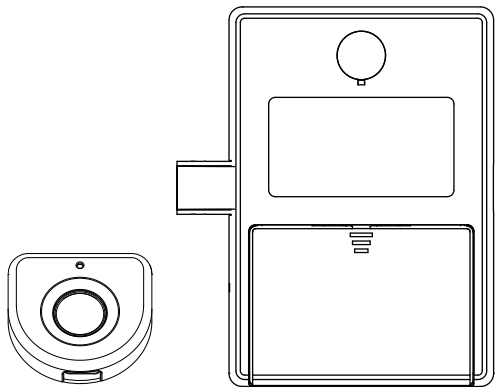


# FINGERPRINT CABINET LOCK

## USER MANUAL

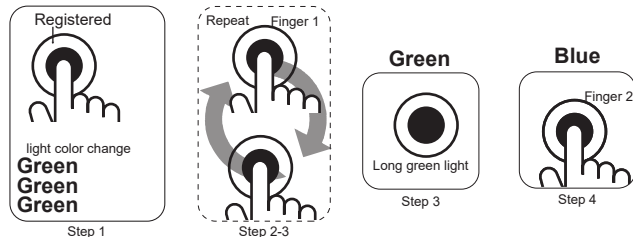


### Feature

- Biometric sensors with high sensitivity
- Fingerprint capacity: 20
- E-key for emergency unlocking and management
- Usage Scenarios: drawer, cabinet, wardrobe etc.

### How to add new fingerprints

- Place your (registered) finger on the sensor. Waiting green light to come on for the third time then release your finger.
- Blue light is on, you can start recording your fingerprints.
- Repeat placing your finger on the sensor (blue and green lights flash alternately) until the green light stays on for 2 seconds (fingerprint registration is successful).
- The blue light is on again, the next fingerprint can be recorded. (If fingerprinting is not required, wait for the light to go out)



### Note

- 1) Make sure add the fingerprint before using. Any finger can unlock in the factory setting
- 2) In order to keep the lock work well, to add no less than 3 fingerprints

### How to delete fingerprints

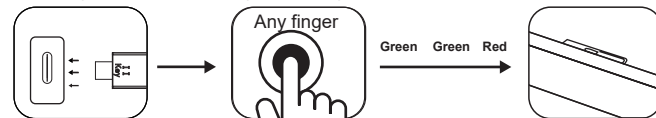
#### Method 1•

- Holding with the registered finger until a red light is illuminated.
- Release your finger.
- Green light for 2 seconds, registered fingerprints will be deleted.



### Method 2

- Insert E-Key
- Place any finger on sensor and wait for the green light to red.
- Green light for 2 seconds, registered fingerprints will be deleted.



### Other Functions

#### 1.E-Key

- Insert E-Key
- Put any finger on sensor, green light on then remove, unlocked
- Pull the door open

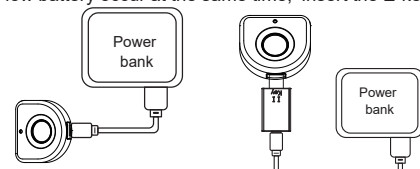


#### 2. Low battery warning

- Insufficient power: Green and red lights flash frequently when unlocking the door. Please replace the battery in time
- Battery type: 3\*AAA alkaline batteries. Prohibit the use of carbon batteries

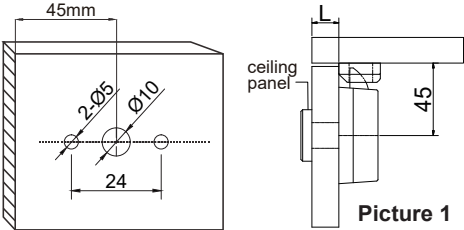
#### 3. Emergency power

- Can be connected to a power bank or mobile plug for external power supply when the power is low. Replace the battery after unlocking.
- Fingerprint error and low battery occur at the same time, insert the E-key and external emergency.



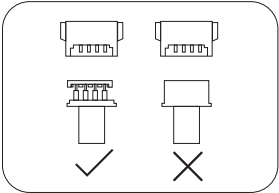
Installation Instructions

1. Put the installation drawing on the door, approx. 45mm between the door frame and center hole (Picture 1), then drill the hole



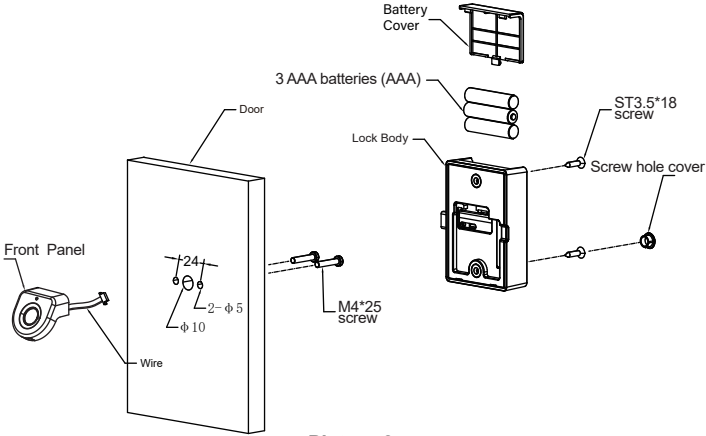
Picture 1

wire connection



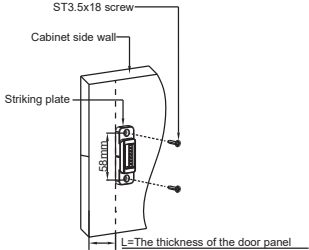
	Door Thickness (mm)	Screw
	14mm~16mm	M4×20
	16mm~18mm	M4×22
	19mm~21mm	M4×25

2. Wire goes through the center hole and fix the front panel by screw M4X25, then connect the lock body, (Tide up the wire not crush), fix lock body by screw ST3.5X18



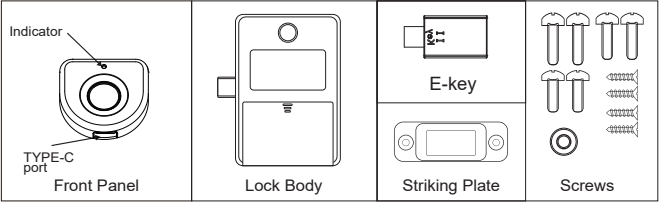
Picture 2

3. Fix the striking plate by screw ST3.5X18 (Make sure latch works well)



Picture 3

COMPONENT



INSTALLATION DRAWING

