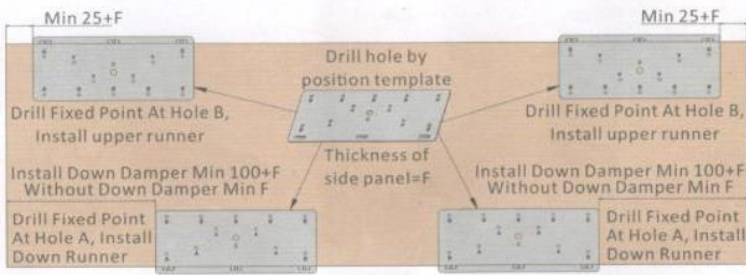
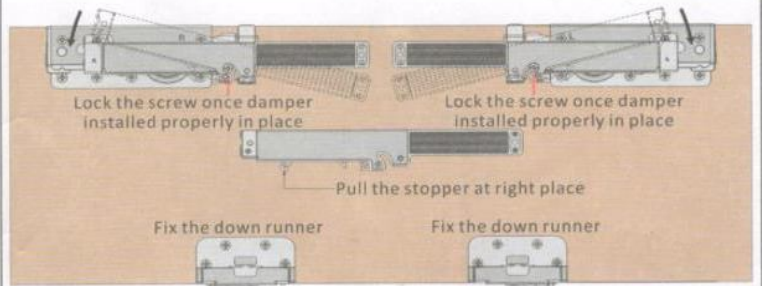


4. Drill size of door and fix the accessories



4.1 Drill the hole with position plate



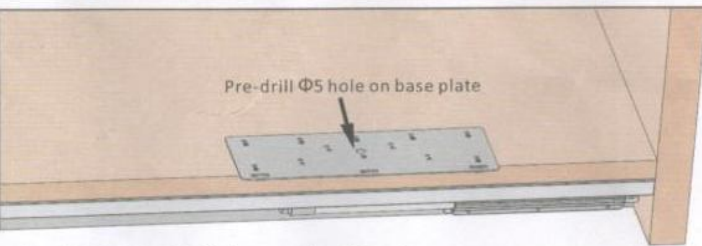
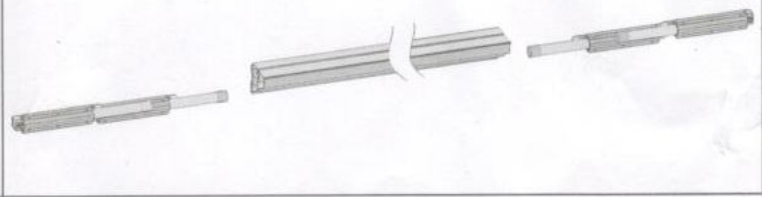
4.2 Fix the upper runner damper and down runner

5. Install the upper and down rail

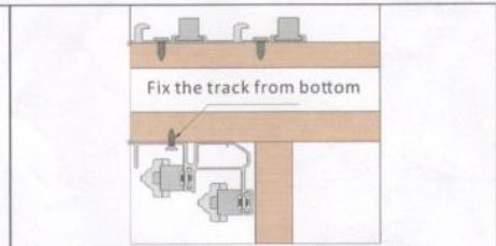
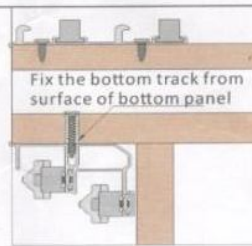
5.1 install the upper damper stopper and fix the upper rail



5.2 Install down damper



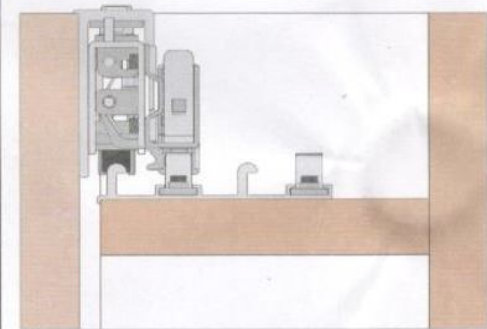
Bottom track fixing solution A



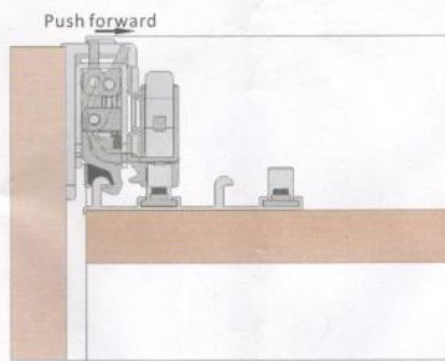
Bottom track fixing solution B

6. Installation of outer and inner door (Inner door first, Outer door second)

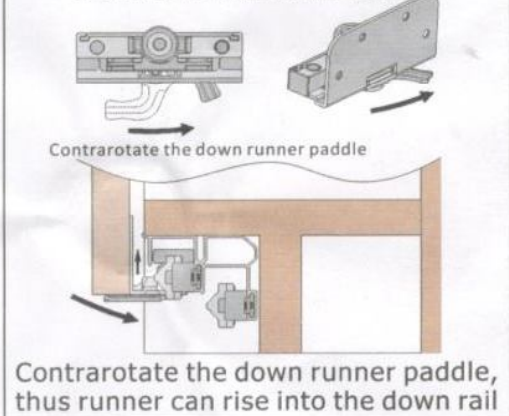
6.1 Hang the upper runner



6.2 Lock the stopper

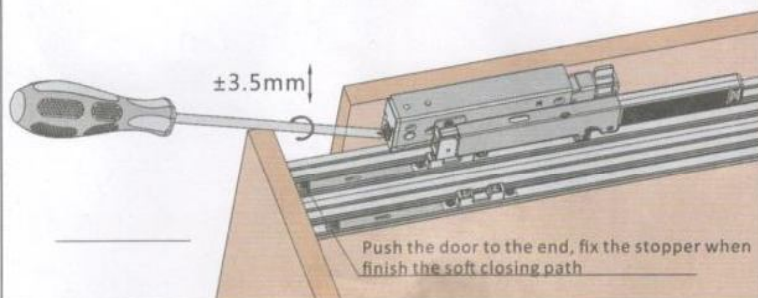


6.3 Install the down runner

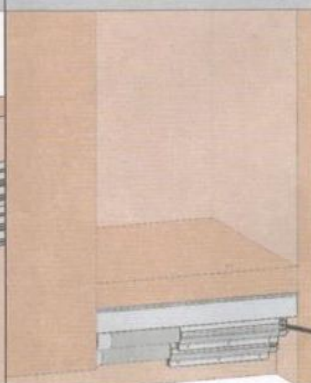


7. Height adjustment of doors and fix the upper damper stopper

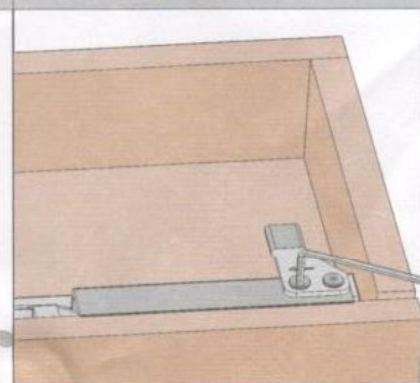
- 7.1 Adjust the hexagonal screw to make the doors in line
- 7.2 Push the door to the end, fix the stopper when finish the soft closing path

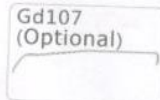
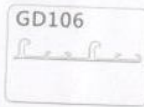


8. Fix the down damper



9. Install the stopper



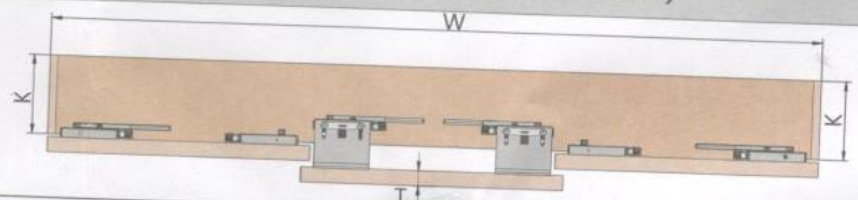
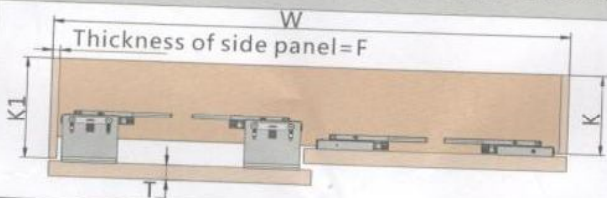


Accessories	QTY			Accessories	QTY		
	2 doors single soft closes	2 doors double soft closes	3 doors double soft close		2 doors single soft closes	2 doors double soft closes	3 doors double soft close
Left runner for outer door	1	1	1	Left runner for inner door	1	1	2
Right runner for outer door	1	1	1	Right runner for inner door	1	1	2
Down runner for outer door	2	2	2	Down runner for inner door	2	2	4
Upper damper	2	4	4	Stopper for upper damper	2	4	4
Down damper	2	4	4	St4x16 Cross recessed flat head tapping screw	40	40	60
Stopper	1	1	2	Position template	1	1	1

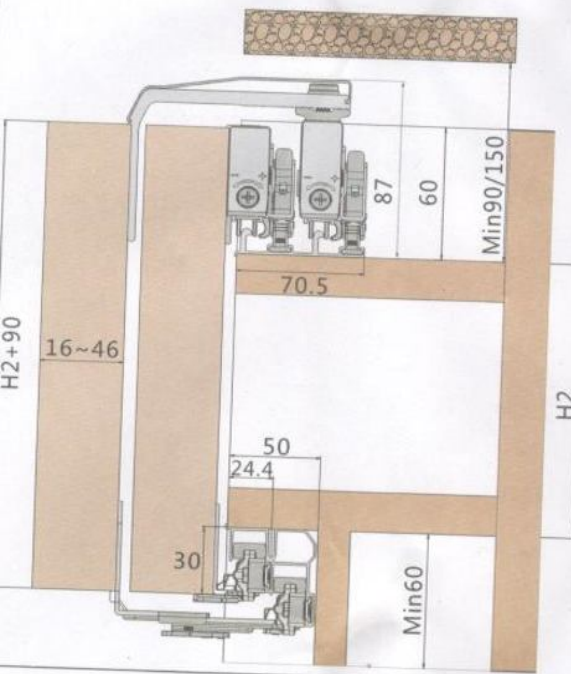
Middle damper added for 3-doors

1. Calculation of cabinet size

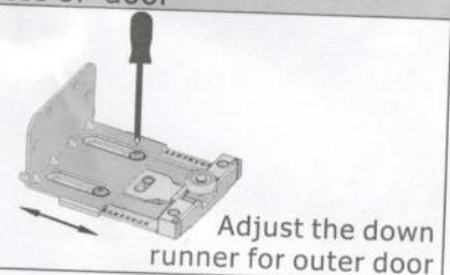
$$K1 = k + T + 8 \quad (T = \text{Thickness of door } 16 \leq T \leq 46)$$



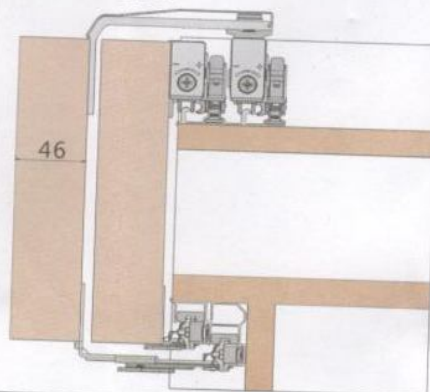
2. Installation dimension



3. Adjust outer door accessories according to the thickness of door



46mm door



16mm door

